

SIGNS & SYMPTOMS OF

HEART FAILURE

When the heart is **too weak or stiff to pump blood effectively**, people experience heart failure.



SHORTNESS OF BREATH



FATIGUE & WEAKNESS



IRREGULAR HEART BEAT



PERSISTENT COUGH & WHEEZING



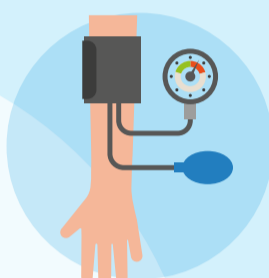
EDEMA



HIGH CHOLESTEROL



INCREASED BLOOD PRESSURE

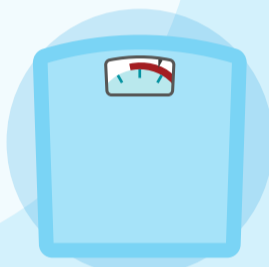


Certain conditions can increase the risk of heart failure.

DIABETES



OBESITY



Black adults have the **highest risk...**



And are hospitalized for heart failure **2x as often as white adults.**

Heart failure can **worsen** over time.



Prevention, early diagnosis & access to treatment are **critical.**



Patients need education, options and policies that promote equitable access to treatment.