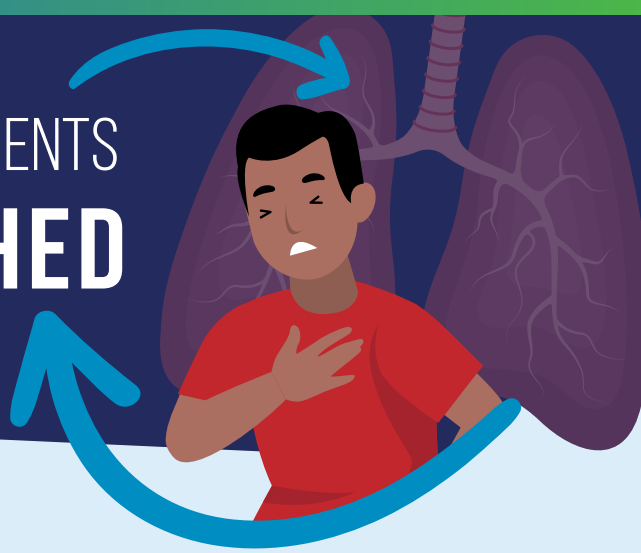


WHEN ASTHMA PATIENTS GET SWITCHED



ASTHMA

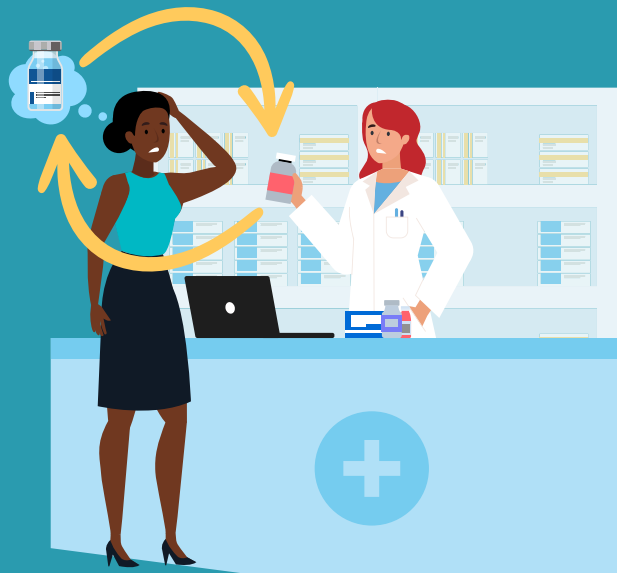
is a complex disease that impacts nearly **all areas** of life.



Identifying an **effective treatment** takes time and work.



But sometimes **insurers switch stable patients** to a different treatment just to cut expenses.



NON-MEDICAL SWITCHING CAN CAUSE:



Asthma exacerbations



Disruptions to life & work



Costly ER visits

SWITCHING STABLE ASTHMA PATIENTS ISN'T SMART.