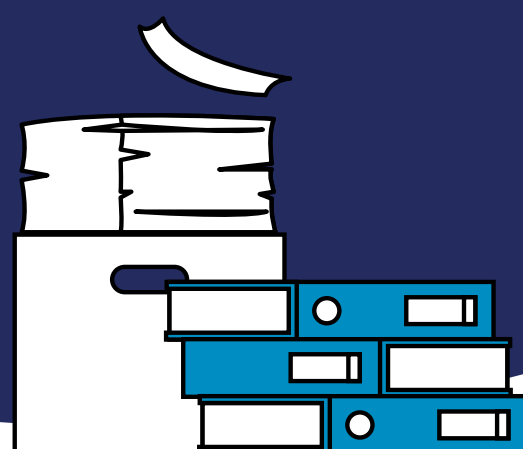
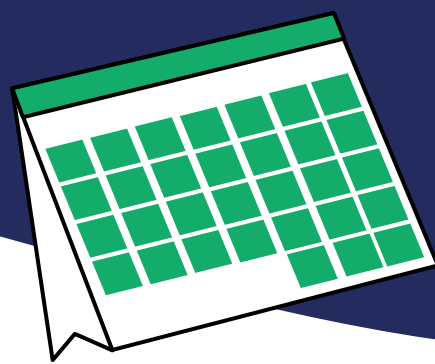
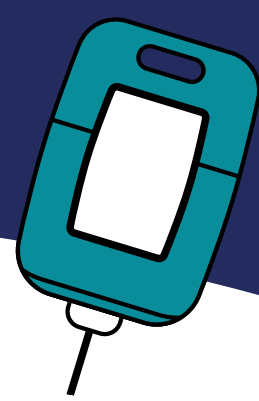





Overcoming Hurdles to Cancer Care



New, innovative options are expanding care and improving outcomes for cancer patients.

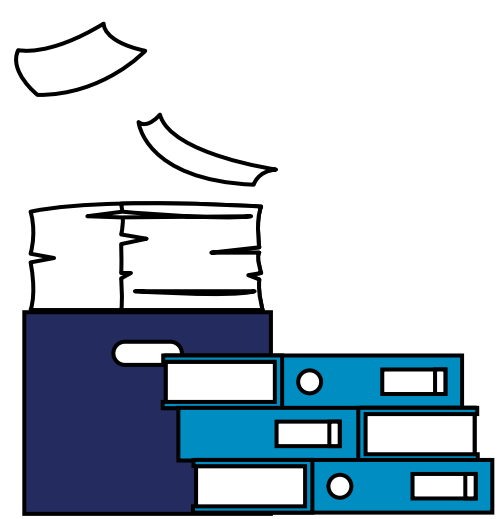
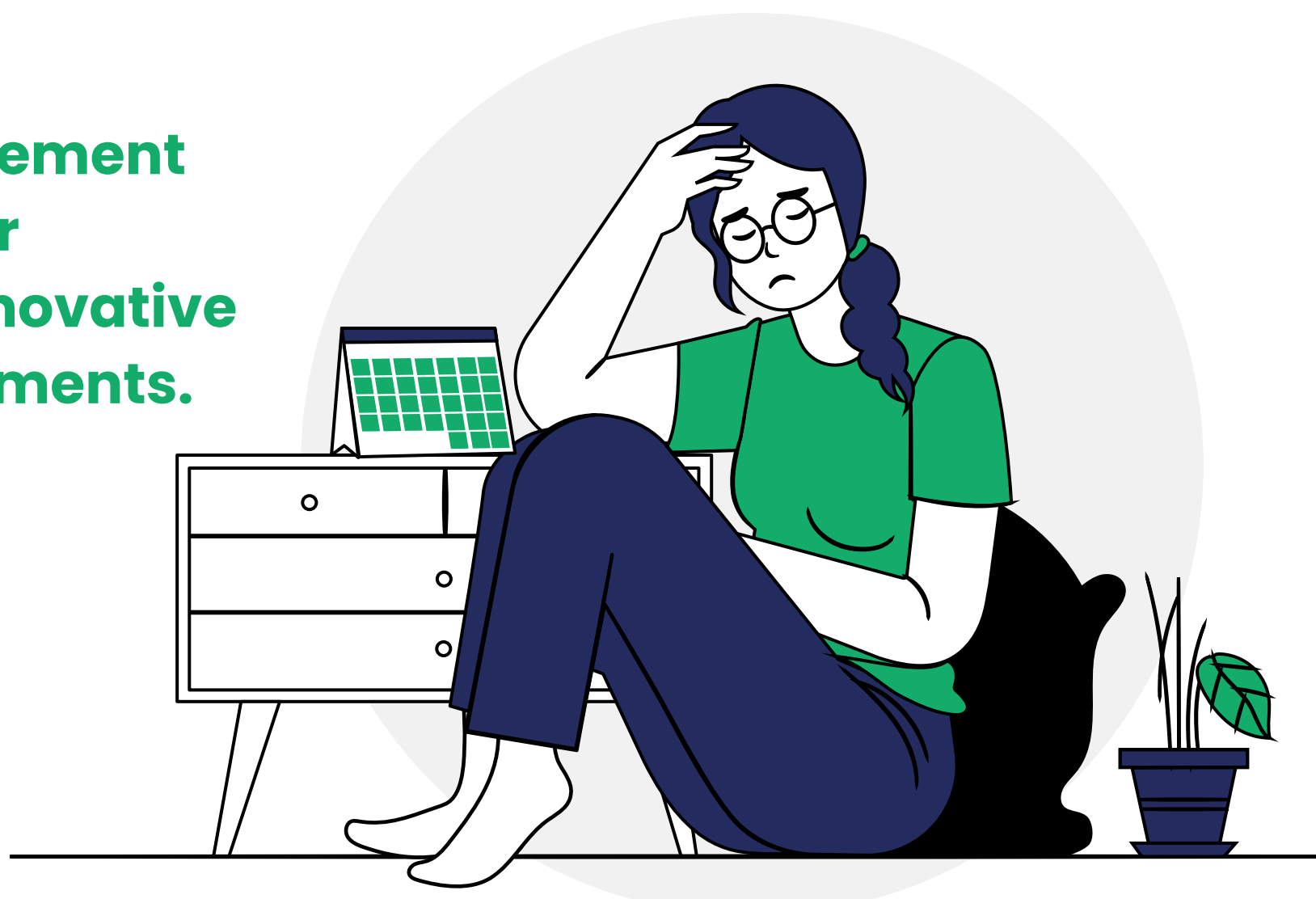
-  Biomarker Testing
-  Immunotherapy Treatments
-  Biosimilars

With more options come more opportunities for targeted treatment.

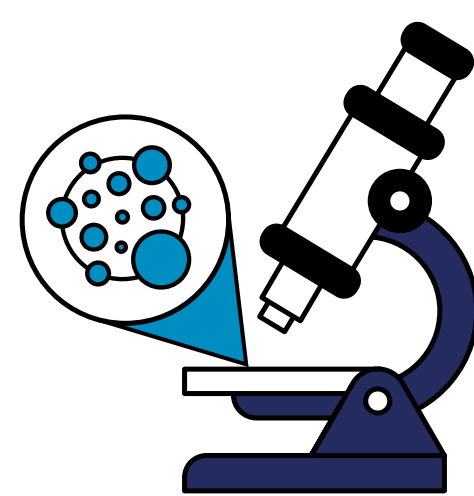
Patients and providers can work together to tailor a personalized treatment plan.

But utilization management barriers hinder cancer patients' access to innovative testing and new treatments.

-  Prior Authorization
-  Step Therapy
-  Non-Medical Switching
-  Formulary Exclusions



For providers, these tactics **create excessive paperwork** and infringe on the patient-provider relationship.



For patients, utilization management **delays and even blocks access to optimal treatments**, allowing cancer to grow and spread.

Cancer patients need timely access to a full range of treatments.

