

# EXPANDING Hepatitis C Testing for Patients of Color



**Patients of color** are disproportionately affected by hepatitis C, and are more likely to suffer chronic infection.



## Early detection is critical.

But testing can be difficult due to:



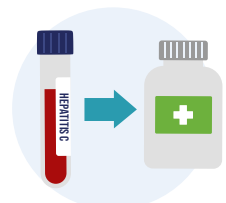
Lack of awareness



Hard-to-reach populations



Lengthy wait times for test results



The gap between test results and treatment

## Point-of-care testing meets patients where they are.



At community centers and local health clinics, patients can receive:



On-site testing

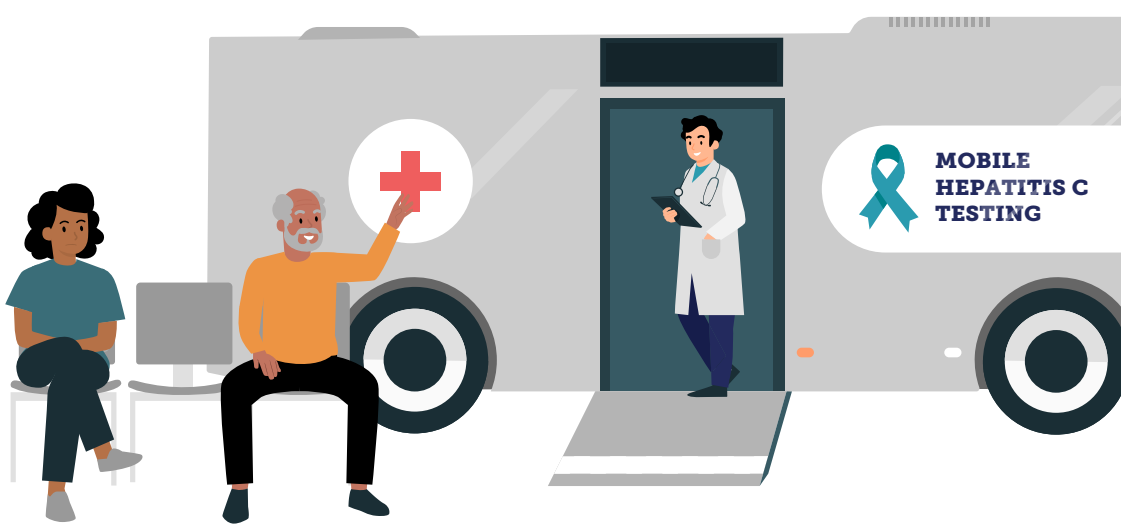


Rapid diagnosis



Immediate treatment

Expanding point-of-care testing breaks down barriers...



And gives more patients the chance to cure their hepatitis C.

The road the hepatitis C elimination starts with accessible testing.

