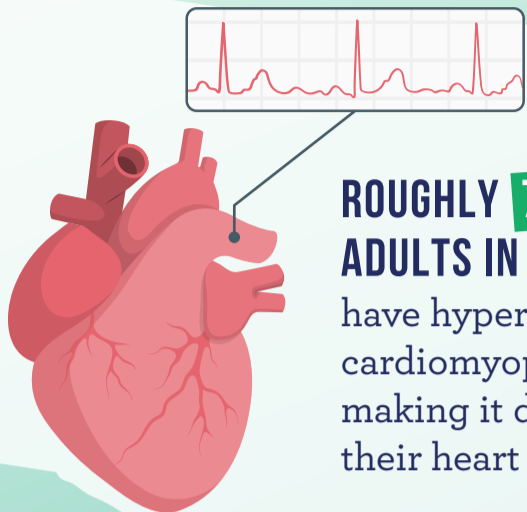


DELAYS IN DIAGNOSING AND TREATING

HYPERTROPHIC CARDIOMYOPATHY



ROUGHLY **700,000** ADULTS IN THE U.S.

have hypertrophic cardiomyopathy, or HCM, making it difficult for their heart to pump blood.

PATIENTS OFTEN WAIT UP TO **TWO YEARS** for an accurate diagnosis.



THERE ARE MANY **ROADBLOCKS** to receiving an HCM diagnosis, such as



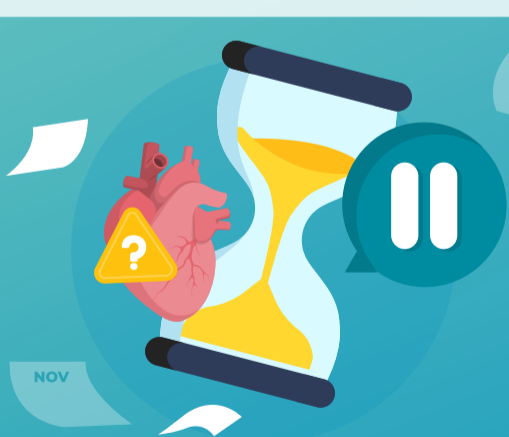
Lack of disease awareness



Delayed referrals to specialists



Limited insurance coverage of specialist visits and tests



Without a proper diagnosis, PATIENTS MAY FACE **DELAYS** in timely and effective treatment.

POLICYMAKERS CAN SUPPORT OPTIMAL CARE

by ensuring patient access and reducing health plan barriers.

